

SHAKESPEARE-IN-THE-SCHOOLS

The touring outreach program of the University of Pittsburgh Department of Theatre Arts



SITS
2012-2013 SEASON



About SITS

For over 20 years Shakespeare-in-the-Schools (aka SITS) has toured throughout Western PA to bring engaging and educational performances and workshops to schools.

Pairing teachers with professional artists, SITS works to create partnerships that invigorate your classroom.

This year, we offer a new twist on a classic tale, a thought-provoking drama, an enchanting fairy tale, and a lesson straight from the mouths of birds.

**Touring, Outreach,
Science, and Shakespeare.**
See all that SITS has to offer...



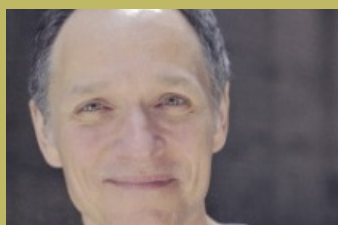
MEET OUR TEACHING ARTISTS

Tamara Goldbogen
Director

Tamara teaches theatre for youth and creative drama. She also leads a study abroad program that follows the ASSITEJ World Congress and Performing Arts Festival around the world. She holds an MFA in Drama and Theatre for Youth from the University of Texas at Austin.

Theo Allyn
Teaching Artist

Most recently seen on stage at the CLO, Theo has worked with a number of theatres including PICT, Bricolage, and the REP.



Ken Bolden
Teaching Artist

A Pittsburgh favorite, Ken has worked for many local theatre companies and is an accomplished Shakespearean actor and monologue coach.

Bria Walker
Teaching Artist

A locally-based actress, singer, and writer, Bria has numerous credits --both film and stage-- here in Pittsburgh and in New York.



Her Hamlet

Devised by **Lisa Jackson-Schebetta & Theo Allyn**
Directed by **Lisa Jackson-Schebetta**
Original Music by **Robert Frankenberry**

Her Hamlet is a vivid interpretation of Shakespeare's *Hamlet* and retells the story through the eyes of the women in the Prince's life. This 40-minute, one woman, one musician show features live, original music and serves as a perfect introduction to the world of Shakespeare. **Her Hamlet** will enhance any study of his classic works.

In-house Dates: Oct 4-13, 2012 (with talkback)

Touring Dates: 2012 Nov - Dec: Tue & Thurs
2013 Jan - April: Wed & Fri

Audience: Middle and High School
(Maximum Audience: 300)

Cost: \$595+ (based on perfs. & travel)

Requirements: 20' X 20' performance space

Running Time: 50 minutes (with 10 min. talkback)

Matinees: Dec 3, 4, 2012; Mar 18, 19, 2013

PA Academic Standards: Arts & Humanities, 9.1-9.4;
Reading, Writing, Speaking, Listening, 1.3-1.7;
History, 8.1, 8.4



HIGH SCHOOL TOURING PRODUCTIONS

Special Event:

THE GAMAGE PROJECT

Written by **Attilio Favorini**

The death of Jonny Gammage at the hands of white police officers, like the beating of Jordan Miles and the death of Trayvon Martin, have aroused passions over racial stereotypes and whether the justice system works the same for all of America's diverse population.

Presented as a staged reading, **The Gammage Project** draws on trial transcripts and personal interviews. Teachers have access to a manual for incorporating these issues into their curriculum, and the readings will be accompanied by a talkback led by lawyers, witnesses, and community activists involved in the case.

In-house Dates: Feb 5 - 8, 2013 at 10 AM

Feb 8, 9 at 8 PM (pay what you can)

Audience: Middle and High School

This Girl Laughs, This Girl Cries, This Girl Does Nothing

Written by **Finegan Kruckemeyer**
Directed by **Dave Peterson**

An award-winning contemporary fairy tale about three sisters abandoned in the forest and forced to find their own way in the world. Shadow puppetry, immersive staging, and a strong ensemble of storytellers weave together a lifetime's worth of stories. This energetic production will charm audiences of all ages.

Touring Dates: 2013 March - April: Tue & Thurs
Audience: 3rd - 7th Grade
Cost: \$595+ (based on perfs. & travel)
Requirements: 20' X 20' performance space
Running Time: 60 minutes
PA Academic Standards: Arts & Humanities, 9.1-9.4;
Reading, Writing, Speaking, Listening, 1.4.1.6;
Geography, 7.2-7.4; Health, Safety, PE, 10.1-10.3;
Family & Consumer Science, 11.2, 11.4



K-7 TOURING PRODUCTIONS



LESSONS FROM THE BIRDS: A Rachel Carson Puppet Play

Written by **Attilio Favorini**
Directed by **Kellee Van Aken**

It's not easy being green, but, as Rachel Carson wrote, children have the unique ability to appreciate their environment. Her pioneering spirit and enduring legacy are brought to life for 2nd-4th graders. **Lessons from the Birds** brings a love of ecology, science and conservation to an audience who will literally inherit our earth.

Touring Dates: Sept 2012 - April 2013
Audience: 2nd - 4th Grade
Cost: \$75+ (based on perfs. & travel)
Requirements: Classroom or library
Running Time: 45 minutes (with 10 min. talkback)
PA Academic Standards: Arts & Humanities, 9.1-9.4;
Reading/Writing, 1.3, 1.6; Science & Technology, 3.3;
Environment & Ecology, 4.4-4.6; Health & Safety, 10.3

Teacher Workshop: Friday, November 2, 2012

BEYOND THE PAPER BAG: PUPPETRY IN THE CLASSROOM

**"It helped me think how I can use simple materials
to create creative puppets to interact
with the children I work with."**

- Teacher feedback from last year's workshop

In this hands-on workshop, professional puppet artist Lisa Leiberling teaches educators learn how to use puppetry in their classroom to expand learning opportunities and enhance their teaching in any subject.

Participants will build several simple puppets, practice basic manipulation techniques, and engage in storytelling exercises. They will also learn tips for introducing puppetry to their students and incorporating this versatile art form into virtually any lesson plan (yes, even math and science!)

ACT 48 Hours Available

Date: Friday, November 2, 2012
Time: 8:30AM-3:00PM
Location: Charity Randall Theatre,
Stephen Foster Memorial,
University of Pittsburgh
Cost: \$60 before October 15
\$75 after October 15
To Register: (412) 624-3459 or sits@pitt.edu

About Lisa Leiberling

A theatrical designer, puppeteer, and teaching artist, Lisa holds a BFA in Puppetry/Children's Theatre from West Virginia University and a MA in Theatre for Youth from the University of Wisconsin-Madison. She has taught classes on a range of theatre topics, including puppetry, creative drama, and costume design, to a wide population from toddlers to teachers, and convicted felons to college students. Lisa was recently honored with a special recognition for the 2012 Don and Elizabeth Doyle Fellowship.



Classroom Workshops:

Unique Experiences Tailored to fit Your Classroom

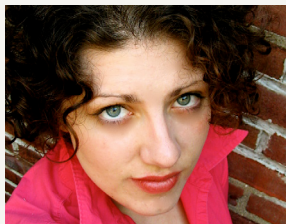
These Classroom Workshops have been specially designed by our professional Teaching Artists with your students in mind. Workshops support the goals and objectives put forth in the Pennsylvania Arts and Humanities Standards. Our Teaching Artists can also adapt their content to fit the needs of your students—book a series of different workshops or multiple sessions with your favorite Teaching Artist.

Teacher Participation

After booking, SITS Teaching Artists will contact the Classroom Teacher prior to Classroom Workshop in order to adapt the workshop to best fit the classroom needs and work together as partners in the classroom.



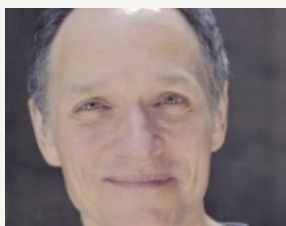
BALCONY 101: Do your students think Shakespeare sounds old-timey and boring? Utilizing multimedia, this workshop will take the Balcony scene from *Romeo and Juliet* through the ages to modern times and into your classroom. Students will get to be on their feet to try different acting styles. Great for 8th-12th grade. Led by Theo Allyn.



TALES WELL TOLD: This workshop will help students develop and present their own stories, based on personal experience, personal or family history, historical narratives, creative fiction, or fairy tales tailored to your classroom's needs. Your student's presentations will never be the same! Can be adapted for 4th-12th grades. Led by Christiana Molldrem.



ACTING THROUGH SONG: This workshop is a way for your students to approach singing a song just as we approach a monologue: it's all acting! Just like Shakespearean acting is tied to the meter, singing is tied to the musical rhythm. Perfect for taking your school musical to the next level. 6th-12th grades. Led by Bria Walker.



FINDING YOUR CHARACTER: How often has directing the school play devolved into just directing traffic with no time left to help the students with the nuts and bolts of acting the scene? These workshops work like vitamins to help supplement the work that the director is doing in rehearsals. Workshops are adaptable to the needs of each student production, and director. All grades. Led by Ken Bolden.

THE SHAKESPEARE EDGE: This flexible workshop is offered to students participating in the Public Theatre Shakespeare competition who want an edge on the competition- or who just want to explore Shakespeare for the fun of it! All grades. Led by Ken Bolden.

How much does a Workshop cost?

\$150 for one 50-minute Classroom Workshop

There is additional travel fee of \$20 per visit for schools outside Allegheny County.

We suggest a maximum of 30 students per class.

10% off when you book three or more Classroom Workshops.

TO BOOK CALL
(412) 624-3459
OR EMAIL
SITS@PITT.EDU

Bring Shakespeare into Your School

How to Book Our Programs:

Touring Performances

To book any of our touring performances, including:

- Her Hamlet
- This Girl Laughs, This Girl Cries, This Girl Does Nothing
- Lessons from the Birds: A Rachel Carson Puppet Play

Contact Gateway to the Arts at (412) 362-6982

Teacher Puppetry Workshop

To reserve your seat at the Puppetry in the Classroom workshop:

Call (412) 624-3459 or email sits@pitt.edu

Classroom Workshops

To book a Classroom Workshop:

Call (412) 624-3459 or email sits@pitt.edu

The Gammage Project

To reserve your tickets:

Call (412) 624-3459 or email sits@pitt.edu

SITS receives generous support from the following organizations:

The Chosky Endowment
The Dorr Foundation
The Fine Foundation
Henry C. Frick Educational Fund of the Buhl Foundation
The Grable Foundation
The Heinz Endowments
The Heinz Endowments Youth EcoArt Initiative
Howard and Nell E. Miller Foundation
Ms. Nancy Welfer
Thermo Fisher Scientific
Center for Environmental Oncology at the University of Pittsburgh
Health Sciences at the University of Pittsburgh
Richard Rauh Endowment
The Buhl Foundation

Shakespeare-in-the-Schools

University of Pittsburgh
Department of Theatre Arts
1617 Cathedral of Learning
Pittsburgh, PA 15260

Phone: (412) 624-3459

Fax: (412) 624-6338

Email: SITS@pitt.edu

Web: www.shakespeare.pitt.edu

This project is also supported by the
Pennsylvania Council on the Arts